

*EnVision
the
Future*

**St. Thomas More
Catholic Church**





A Message from Our Pastor

Dear Brothers and Sisters in Christ,

St. Thomas More Parish was built and sustained by generations of faithful, hard-working, and spiritual parishioners. Their stewardship provided the legacy of a place of worship that fostered the spiritual growth of our families and allowed us to find daily sustenance and relevance in our Catholic faith. We are blessed to continue to have a prayerful, involved, and ever-growing parish community.

The strength of a parish is its people. Our parish has a history of families generously working together to meet growth needs. The current campus, including our beautiful worship and gathering space, parish hall, and offices, stands as testimony to the hard work and generosity of our members and those who have gone before us. The *Vision* and *Re-Vision* campaign efforts built the current space that has welcomed more families to St. Thomas More and allowed a steady growth of parish activities and ministry participation.

In a 2007 parish survey, you identified areas of St. Thomas More that needed development. That same year our parish was asked to support the mission of our diocese through their capital campaign and was provided with a “fair share” goal that we were expected to contribute.

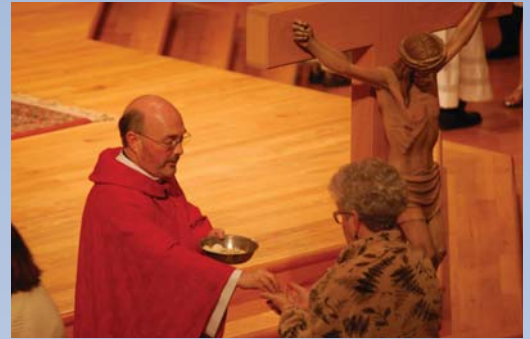
Based on these needs, we moved forward with a feasibility study last August to which over half of the parish families responded. Your thoughts provided the input that formed the goals that have now been approved by the Steering Committee, Pastoral Council, Finance Committee, and Bishop William Medley.

Please pray that God’s wisdom will guide the members of St. Thomas More as we work for a successful Capital Campaign. Also pray that the Holy Spirit will open your heart and show you the part He wants you to play in this important effort as we continue to share and celebrate Christ’s abiding presence in our parish community. Be inspired by His call to excel in good works through example and service, and to enter into the grace of stewardship and share your love as God has shared with you.

St. Thomas More is much more than bricks and mortar. The parish is central to the faith life of members. This is the Father’s house where we are fed and cared for through the Eucharist. Baptisms, weddings, holidays, holy days, and funerals bring us together as family. Our parish is growing and evolving and there are needs to be met. Please pray as we all unite in faith and work together to *EnVision the Future* of St. Thomas More.

Yours in Christ,

Rev. J. Patrick Reynolds



A Message from the Capital Campaign Co-Chairmen

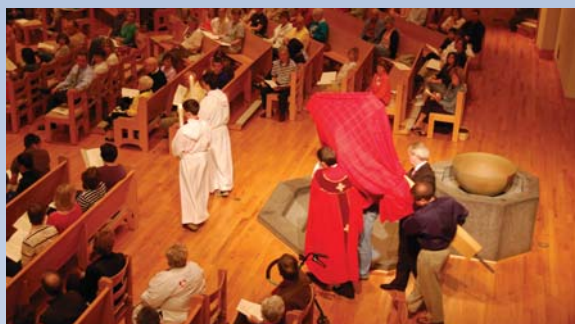
This is an exciting time in the life of the St. Thomas More Parish! We have seen our church evolve over the years through the work of extraordinary members to become a vibrant Catholic community that welcomes all and reaches out to our neighbors to do God's work.

The enthusiastic commitment of our parishioners has led to the formation of dozens of ministries over the past few years, allowing the Gospel message to be put into action. Those involved in ministries meet, plan, pray, celebrate, and do their work within our beautiful campus that resulted from those with vision before us.

We invite you now to *EnVision the Future* of St. Thomas More by answering the call and supporting the Capital Campaign. We are proud to be a part of continuing the tradition of building a community that will serve our children and grandchildren for years to come.



Jim O'Rourke



Bill Jones

Our Mission

We are St. Thomas More Parish, members of the living body of Christ, born again in Baptism and strengthened through the Eucharist to promote the Gospel values of our Catholic faith.

Our Challenge

It is our obligation to those who worked diligently in the past to provide St. Thomas More with the current worship campus and financial stability to prudently look at the identified needs of St. Thomas More and *EnVision the Future*. The plan must take into account fiscal responsibility balanced with continual development of ministries and opportunities for our parish families to grow in faith.

Our Solutions

The Core Committee, Steering Committee, Pastoral Council, Pastor, and Bishop have approved the following goals:

- † **EUCCHARISTIC CHAPEL** — We plan to build a small chapel that allows the Eucharist to be moved from the bell tower to become more present in the lives of our parishioners by providing visibility and accessibility. It will be used for Eucharistic Adoration, private devotion, and small Sacramental celebrations such as Masses, weddings, and in some cases, funerals. This will complete the original site building plan, and has a projected cost of \$750,000.
- † **DIOCESAN FAIR SHARE** — We plan to begin paying the diocese \$635,923 requested in 2007, over a five-year period, to assist with its Capital Campaign. Funds from our campaign are needed to assist the general budget of St. Thomas More, sustain the approximate \$127,000 payment owed yearly, and continue to faithfully meet the St. Mary School subsidy and annual needs of the parish.
- † **ENDOWMENT FUND** — We plan to continue prudent financial management by building the St. Thomas More Endowment Fund by \$350,000, bringing the total closer to the \$1 million level, which would allow distribution of interest income. This can be added to the annual operating or maintenance budget to assist with significant issues that will need to be addressed on our campus that is 14 years old, including the roof, the air conditioning chiller, and the asphalt of the parking lot.
- † **MEETING ROOM RENOVATION** — We plan to use approximately \$100,000 to renovate the current meeting space at St. Thomas More and furnish it to be more versatile for the needs of multiple ministries, including Bible study, adult education, prayer, youth, and senior groups.

Priority Project

Feasibility study results revealed that St. Thomas More parishioners named the Eucharistic Chapel as the priority building project. The original site drawings for our church campus included plans for the chapel, but budget constraints resulted in placing the tabernacle in the bell tower. This very small area has continued to serve as the Eucharistic Chapel through the years, with the Parish Hall being used on Holy Thursday for Adoration.

The design of the new Eucharistic Chapel will complete the initial church campus plan by adjoining the church to provide increased visibility and accessibility for:

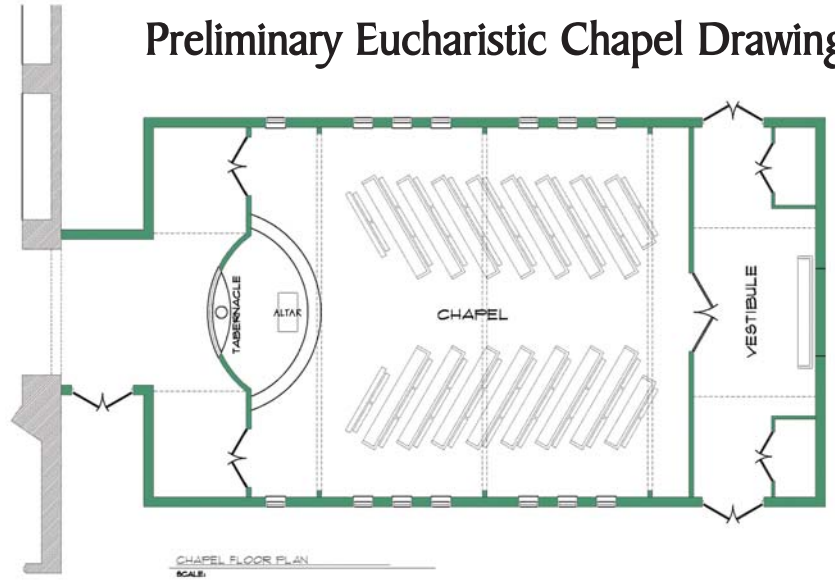
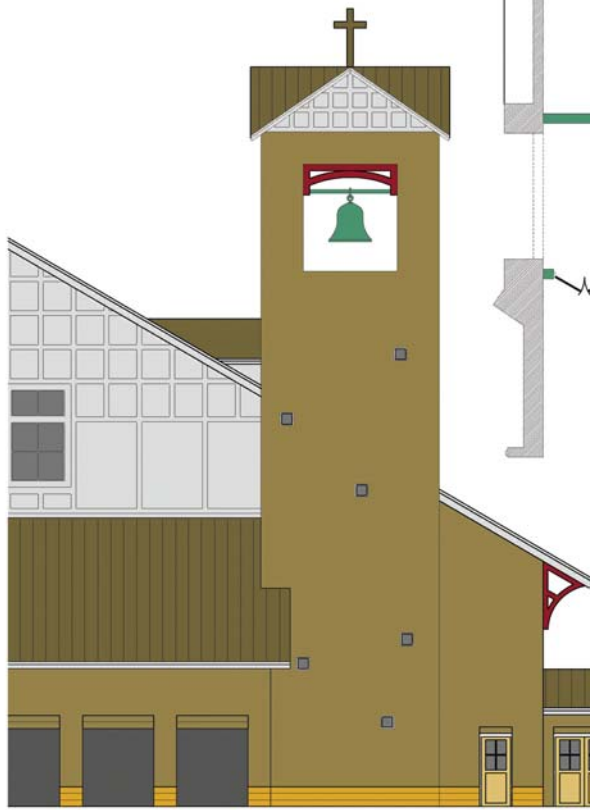
- † Eucharistic Adoration
- † Private devotion
- † Small sacramental celebrations
- † Daily Mass.



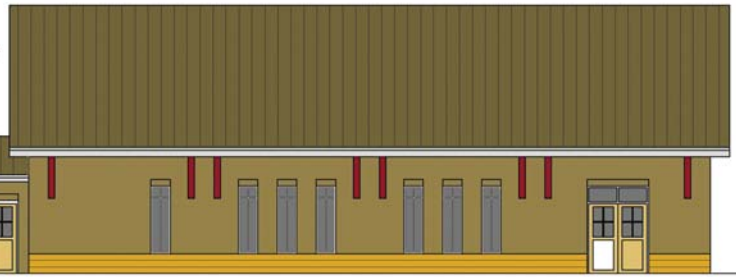
We plan to build a chapel that will allow the Eucharist to be more present in the lives of our parishioners.



Preliminary Eucharistic Chapel Drawing



CHAPEL FLOOR PLAN
SCALE:



How Can I Help?

When we accept God's gifts of time, talent, and treasure, we also accept the responsibility to use these gifts in responding to God's call. We, as good stewards, may express our joy and gratitude by giving back generously.

Making a Faith Promise Commitment is a prudent, practical, and responsible form of stewardship. We must rely on everyone to plan a personal three-year goal of generosity and then accomplish it, one step at a time. With the spirit of equal sacrifice—not equal gifts—our commitment relies on the spiritual values of sacrifice and faith.

Please join your parish community in supporting the *EnVision the Future* campaign by praying daily the words below and asking the Holy Spirit to guide this important process. Also be open to pledge from your heart when the opportunity is presented to you during our commitment week in October.

Campaign Faith Promise Levels

- \$100,000 and above
 - \$ 50,000 to \$99,999
 - \$ 25,000 to \$49,999
 - \$ 15,000 to \$24,999
- | | | | | | |
|--------------------------|--------------|----------|----------------|------------|--------|
| <input type="checkbox"/> | 3 Shares | \$72/wk. | or \$3,600/yr. | = \$10,800 | 3 yrs. |
| <input type="checkbox"/> | 2 Shares | \$48/wk. | or \$2,400/yr. | = \$ 7,200 | 3 yrs. |
| <input type="checkbox"/> | 1 1/2 Shares | \$36/wk. | or \$1,800/yr. | = \$ 5,400 | 3 yrs. |
| <input type="checkbox"/> | 1 Share | \$24/wk. | or \$1,200/yr. | = \$ 3,600 | 3 yrs. |
| <input type="checkbox"/> | 3/4 Share | \$18/wk. | or \$ 900/yr. | = \$ 2,700 | 3 yrs. |
| <input type="checkbox"/> | 1/2 Share | \$12/wk. | or \$ 600/yr. | = \$ 1,800 | 3 yrs. |
| <input type="checkbox"/> | 1/4 Share | \$ 6/wk. | or \$ 300/yr. | = \$ 900 | 3 yrs. |

Our Parish Prayer

Heavenly Father,

We thank you for the gift of our Lord Jesus Christ in the Holy Eucharist. May our adoration of Christ, the sustenance of life and the Sacrament of the Altar, present in the tabernacle, fill us with transforming grace to be His hands, His feet, His voice, and His heart in our work of ministry. May we, the faithful of Saint Thomas More Parish in the Diocese of Owensboro, be endowed with spiritual wisdom, lively faith, firm hope, and generous love. We pray with our patron saint that you give us, good Lord, the courage to work diligently for that which we seek.

Through Christ our Lord.

Amen.



Frequently Asked Questions

How will we make our contributions?

We will be asked to make a “Faith Promise.” The total amount you pledge may be given over a three-year period. You will be presented with several “Share Plans” from which to choose. Please decide the “Faith Promise” that best fits your family’s ability to contribute. Once you have made your choice, you will receive specially marked envelopes, which you will use to make your contributions.

What is meant by a “Faith Promise?”

A Faith Promise is a gift that represents sacrifice to support God’s work. The Faith Promise is in addition to the amount you now regularly commit to St. Thomas More Catholic Church. You will be presented with several “share plans” from which to choose. It is up to you to decide, with prayerful thought, the Faith Promise from your family.

Are “Faith Promise” contributions tax deductible?

Yes, if you itemize charitable contributions on your federal tax returns.

Will all members of our church family be asked to make a sacrificial gift?

Yes, each church family member will be asked to make a “Faith Promise.” This “Faith Promise” is a gift commitment that represents a sacrifice, in addition to your regular offering, to support this special project of God’s work. The total you pledge may be given over the three-year campaign period, and you will receive specially marked envelopes in which to make your contributions.

Is the card I sign a legal document?

No. The card is not a promissory note. It is a declaration of intent, a commitment in faith, a “Faith Promise.” It is understood that your gift may be revised should circumstances make it necessary.

Can I give assets other than cash?

Yes. There are other ways available to you, such as property, stocks, or other tangible assets. Please contact the church office for further information.

When will my contribution begin?

Contributions start in October 2010. You will receive special envelopes to use in making your contributions.





St. Thomas More Catholic Church

5645 Blandville Road
Paducah, KY 42001
270-534-9000
www.stmore.org